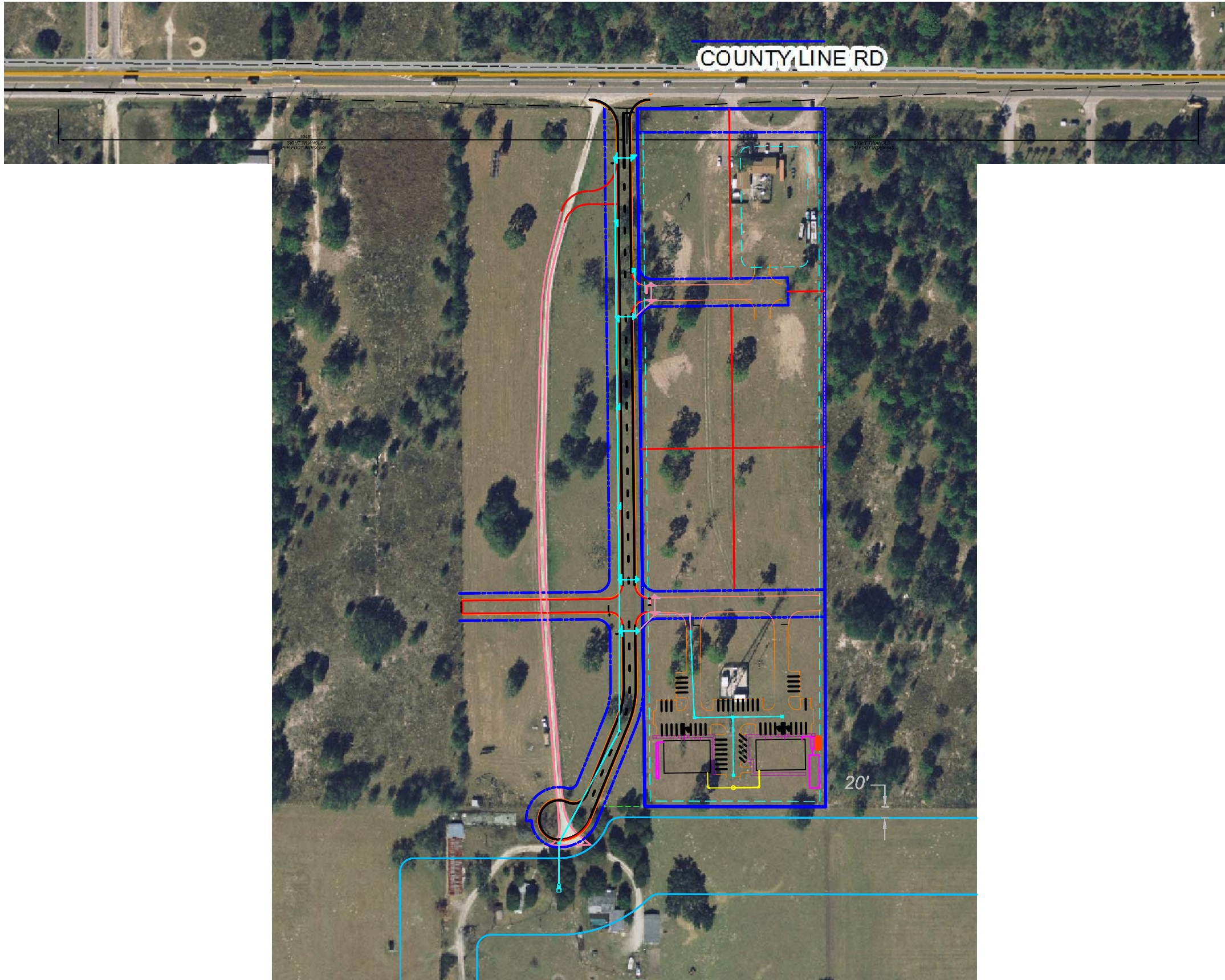


F:\PC2\Simultaneous Submittal Plans\PC2_06_SITE PLAN with aerial.dwg, 5/11/2010 2:07:32 PM



**DAVE SCHMITT
ENGINEERING, INC.**
3680 AVALON PARK EAST BLVD.
SUITE 310
ORLANDO, FL 32828
407-207-9088 FAX 407-207-9089
Certification of Authorization #27471

CONTRACTOR "AS-BUILTS"

I hereby state that these "As-Builts" were furnished to me by the contractor listed below, I, or an employee under my direct supervision have reviewed these "As-Builts" and believe them to be in compliance with my knowledge of what was actually constructed. This statement is based upon site observations of the construction.

Contractor _____ Engineer _____
Not valid without the signature and the original raised seal of a Florida Registered Engineer.

REVISIONS					
DATE	BY	DESCRIPTION	DATE	BY	DESCRIPTION
			08-13-09	KAS	REV. PER PASCO COUNTY COMMENTS
			06-30-09	TM	REV. PER PASCO COUNTY COMMENTS
			03-20-09	KAS	REV. PER PASCO COUNTY COMMENTS
			01-30-09	TM	REV. PER PASCO COUNTY COMMENTS
11-11-09	TM	REV. PER PASCO COUNTY COMMENTS	12-11-08	GG	REV. PER SWFWMD

DAVE M. SCHMITT
FLORIDA REG. NUMBER
48274

TENDER CARE CENTER
PASCO COUNTY, FLORIDA

DATE: MAY 2010
PROJECT NO.: PC-2
DRAWN BY: TFS
CHECKED BY: AJM
SCALE: 1"=200'
SHEET: 6 OF 11