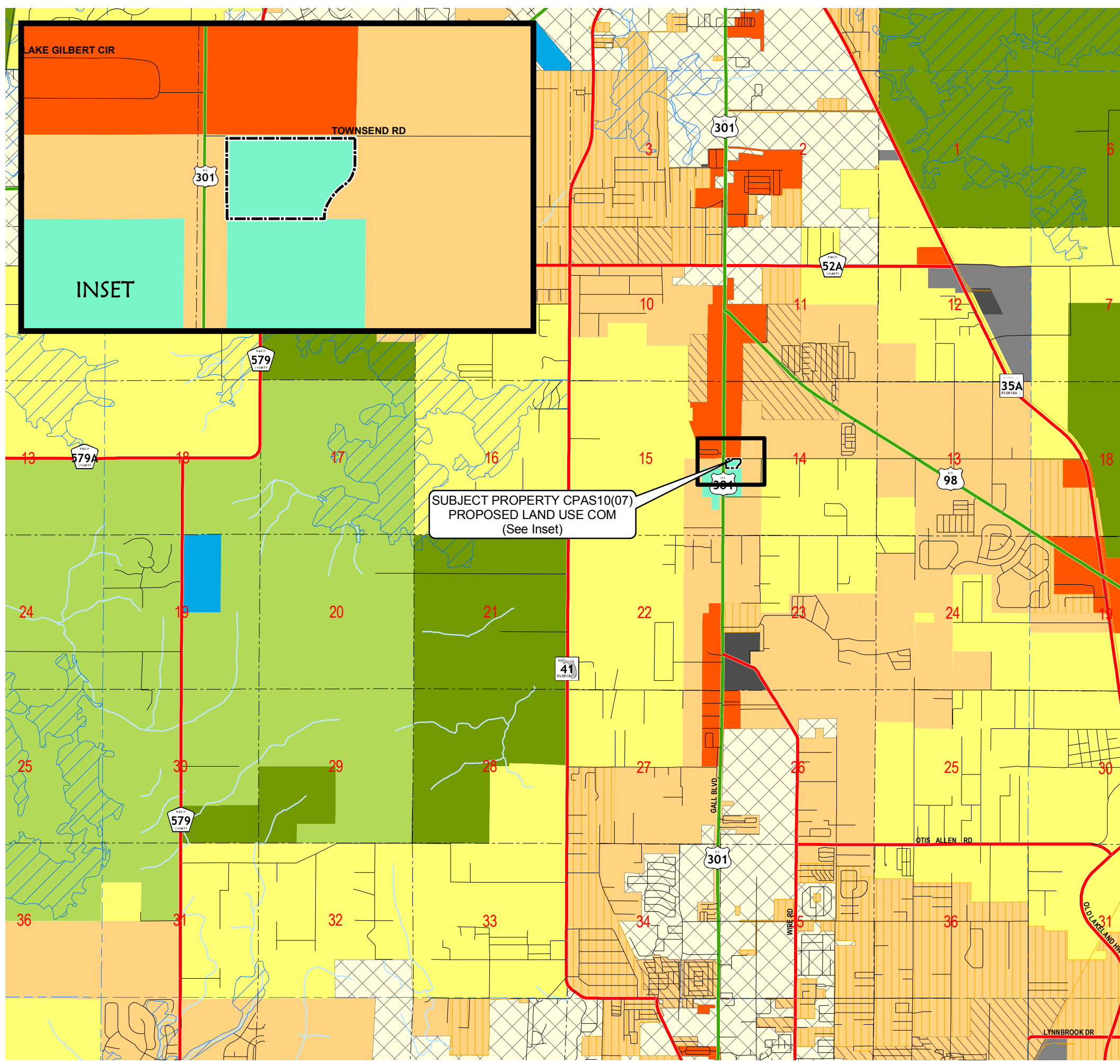


THE COMPREHENSIVE PLAN OF UNINCORPORATED PASCO COUNTY FUTURE LAND USE 2025

CPAS10(07) PROPOSED LANDUSE T 25 S - R 21 E SHEET 15

DATE ADOPTED: 06/15/89

ORDINANCE #: 89-13

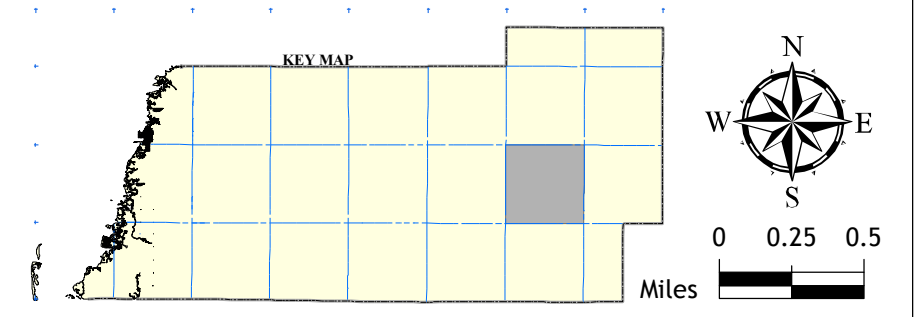


FUTURE LAND USE 2025 CLASSIFICATIONS

- | | | | |
|--|---------------------------------------|--|-------------------------|
| | AG
Agricultural | | RES - 24
Residential |
| | AG/R
Agricultural / Rural. | | NT
New Town |
| | C/L
Coastal Land | | RES - 12
Residential |
| | CON
Conservation Land | | RES - 9
Residential |
| | AT
Major Attractors | | RES - 6
Residential |
| | R/OS
Major Recreation / Open Space | | RES - 3
Residential |
| | P/S P
Major Public / Semi - Public | | RES - 1
Residential |
| | MU
Mixed Uses | | OFF
Office |
| | IL
Industrial - Light | | TC
Town Center |
| | IH
Industrial - Heavy | | EC
Employment Center |
| | ROR
Retail / Office / Residential | | COM
Commercial |
| | PD
Planned Development | | |

OVERLAYS

- | | | | |
|--|--------------------------|--|-------------|
| | CLASS I WETLANDS / LAKES | | CITY LIMITS |
| | FLEXIBLE PLAN BOUNDARY | | ROR OVERLAY |
| | PASADENA HILLS OVERLAY | | |



REVISIONS

DATE:	ORDINANCE #	DATE:	ORDINANCE #
10/23/90	// 90-14		
01/31/93	// AI		
07/19/96	// AI		
08/12/97	// 97-11		
08/12/97	// 97-12		
12/17/02	// 02-37		
04/22/03	// 03-06		
12/20/05	// 05-41		
06/27/06	// 06-18		
11/20/07	// 07-39		
01/08/08	// 08-09		



Pasco County, Florida
Geographic Information Systems
(G.I.S.)
Engineering Services
Survey Department

Created By: JMH Date Created: July 2010
Checked By: Date Printed: July 2010

C:\work_order\Growth\cpas10\mxd\cpas10(07)P.mxd