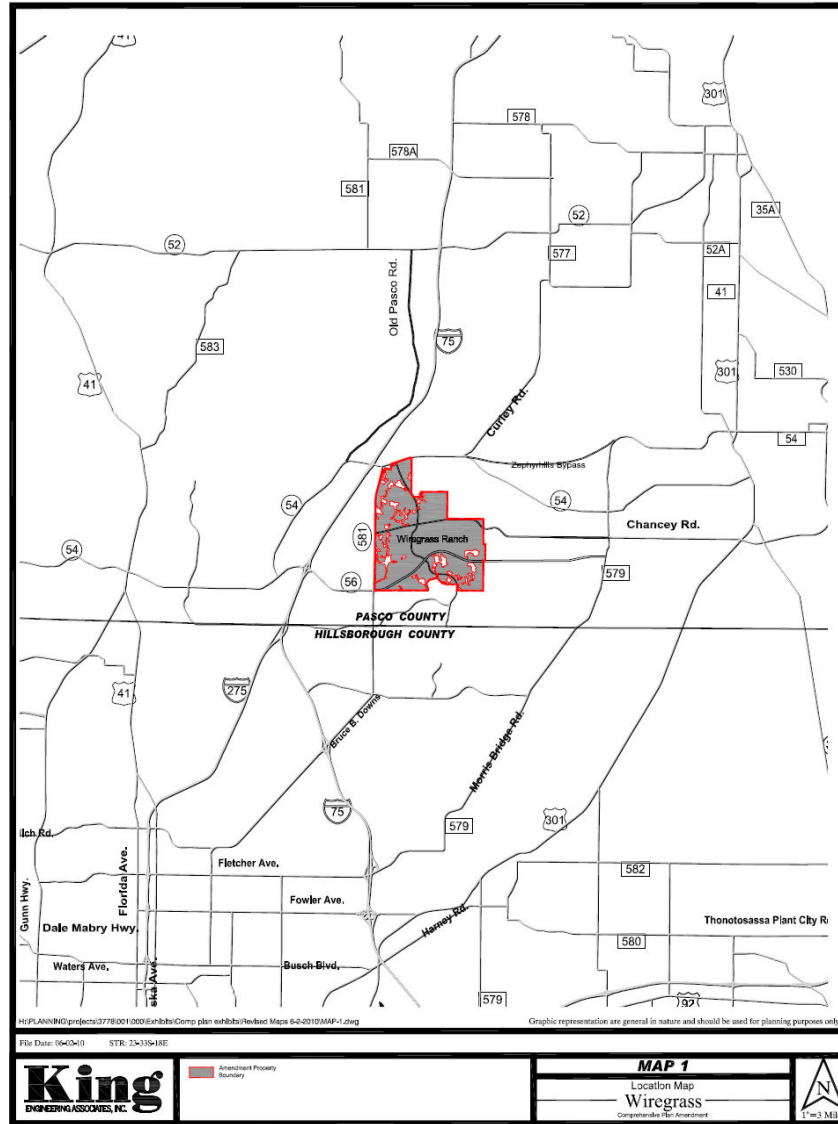
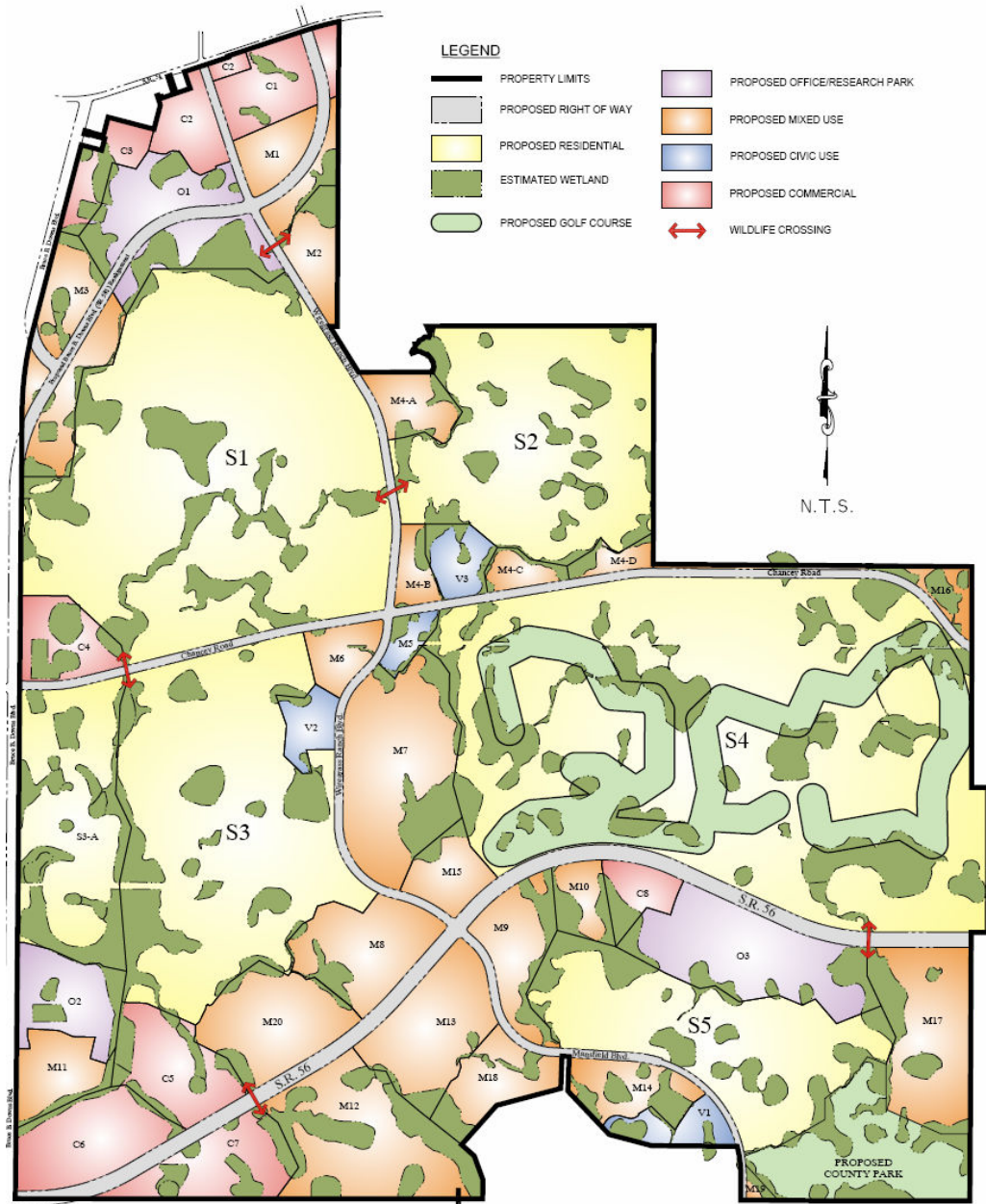


Wiregrass Ranch DRI



Proposed Map H



Wiregrass DRI

Background Information

- **Original DO approved by BCC on July 17, 2007**
- **DO Amendment settling DCA Appeal adopted by BCC on October 9, 2007**
- **On May 5, 2009, in accordance with Section 380.06(19), F.S., the developer filed a NOPC as summarized above.**

NOPC Summary

- **Revise certain parcel configurations on Map H to accommodate latest proposed development**
- **Add Attraction and Recreation Facility, Medical Office, and Community College as new land uses**
- **Modify the land use table to reflect land use exchanges to Medical Office, Community College, Hotel, ARF, etc.**
- **Update the proportionate share table with the latest Florida Department of Transportation costs**
- **Update the allocation of entitlements within Phase 1 to certain Phase 1 mitigation requirements**
- **Allow for flexibility on community park location**
- **Correct various scrivener's errors within the DO & other changes**

Transportation Mitigation

- No changes to list of improvements for Phase 1
 - Updated costs and credits accordingly
 - Broke down Phase 1 mitigation into subphases – 1A, 1B, 1C, & 1D
 - Per Trip Fee for Subphase 1C/1D

Staff recommendation

- Approval