

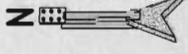
PARCEL ID NO. 01-26-16-001-0030
 CONING AC
 FUTURE LAND USE: RES-3

LESS AND EXCEPT
 PORTION OF
 TRACT 3

CITY OF NEW PORT RICHEY
 WATER TREATMENT FACILITY

10' TYPE A BUFFER REQUIRED
 (APPLICANT REQUESTS VARIANCE)

STARKEY SELF STORAGE
 5100 STARKEY BLVD. AND DEARBELLIS RD., NEW PORT RICHEY, FLORIDA
 TRI COUNTY DEVELOPMENT, INC.
 PREPARED BY:
 HEAVY METAL DEVELOPMENT CORPORATION (CA 9415)
 1000 MARKET STREET
 NEW PORT RICHEY, FL 34652
 TEL. (727) 847-4466



SITE PLAN WITH BUFFER VARIANCE I

PARCEL ID NO. 01-26-16-001-0030
 CONING AC
 FUTURE LAND USE: RES-3

E STARKEY BLVD.
 210' R/W

S 0070'01" W 561.57'

CLIMATE CONTROLLED STORAGE BLDG. 2
 2-STORY
 FF EL. 27.00

CLIMATE CONTROLLED STORAGE BLDG. 1
 2-STORY
 FF EL. 27.00

BLDG. A
 2,400 S.F.

BLDG. B
 1,800 S.F.

BLDG. C
 1,800 S.F.

BLDG. D
 1,800 S.F.

BLDG. E
 2,400 S.F.

BLDG. F
 1,200 S.F.

BLDG. G
 1,200 S.F.

BLDG. H
 1,200 S.F.

BLDG. I
 2,000 S.F.

BLDG. J
 2,000 S.F.

BLDG. K
 2,000 S.F.

BLDG. L
 2,250 S.F.

BLDG. M
 2,000 S.F.

BLDG. N
 2,000 S.F.

BLDG. O
 2,000 S.F.

BLDG. P
 2,000 S.F.

BLDG. Q
 2,000 S.F.

BLDG. R
 2,000 S.F.

BLDG. S
 2,000 S.F.

BLDG. T
 2,000 S.F.

BLDG. U
 2,000 S.F.

BLDG. V
 2,000 S.F.

BLDG. W
 2,000 S.F.

BLDG. X
 2,000 S.F.

BLDG. Y
 2,000 S.F.

BLDG. Z
 2,000 S.F.

BLDG. AA
 2,000 S.F.

BLDG. AB
 2,000 S.F.

BLDG. AC
 2,000 S.F.

BLDG. AD
 2,000 S.F.

BLDG. AE
 2,000 S.F.

BLDG. AF
 2,000 S.F.

BLDG. AG
 2,000 S.F.

BLDG. AH
 2,000 S.F.

BLDG. AI
 2,000 S.F.

BLDG. AJ
 2,000 S.F.

BLDG. AK
 2,000 S.F.

BLDG. AL
 2,000 S.F.

BLDG. AM
 2,000 S.F.

BLDG. AN
 2,000 S.F.

BLDG. AO
 2,000 S.F.

BLDG. AP
 2,000 S.F.

BLDG. AQ
 2,000 S.F.

BLDG. AR
 2,000 S.F.

BLDG. AS
 2,000 S.F.

BLDG. AT
 2,000 S.F.

BLDG. AU
 2,000 S.F.

BLDG. AV
 2,000 S.F.

BLDG. AW
 2,000 S.F.

BLDG. AX
 2,000 S.F.

BLDG. AY
 2,000 S.F.

BLDG. AZ
 2,000 S.F.

BLDG. BA
 2,000 S.F.

BLDG. BB
 2,000 S.F.

BLDG. BC
 2,000 S.F.

BLDG. BD
 2,000 S.F.

BLDG. BE
 2,000 S.F.

BLDG. BF
 2,000 S.F.

BLDG. BG
 2,000 S.F.

BLDG. BH
 2,000 S.F.

BLDG. BI
 2,000 S.F.

BLDG. BJ
 2,000 S.F.

BLDG. BK
 2,000 S.F.

BLDG. BL
 2,000 S.F.

BLDG. BM
 2,000 S.F.

BLDG. BN
 2,000 S.F.

BLDG. BO
 2,000 S.F.

BLDG. BP
 2,000 S.F.

BLDG. BQ
 2,000 S.F.

BLDG. BR
 2,000 S.F.

BLDG. BS
 2,000 S.F.

BLDG. BT
 2,000 S.F.

BLDG. BU
 2,000 S.F.

BLDG. BV
 2,000 S.F.

BLDG. BV
 2,000 S.F.

BLDG. BW
 2,000 S.F.

BLDG. BX
 2,000 S.F.

BLDG. BY
 2,000 S.F.

BLDG. BZ
 2,000 S.F.

BLDG. CA
 2,000 S.F.

BLDG. CB
 2,000 S.F.

BLDG. CC
 2,000 S.F.

BLDG. CD
 2,000 S.F.

BLDG. CE
 2,000 S.F.

BLDG. CF
 2,000 S.F.

BLDG. CG
 2,000 S.F.

BLDG. CH
 2,000 S.F.

BLDG. CI
 2,000 S.F.

BLDG. CJ
 2,000 S.F.

BLDG. CK
 2,000 S.F.

BLDG. CL
 2,000 S.F.

BLDG. CM
 2,000 S.F.

BLDG. CN
 2,000 S.F.

BLDG. CO
 2,000 S.F.

BLDG. CP
 2,000 S.F.

BLDG. CQ
 2,000 S.F.

BLDG. CR
 2,000 S.F.

BLDG. CS
 2,000 S.F.

BLDG. CT
 2,000 S.F.

BLDG. CU
 2,000 S.F.

BLDG. CV
 2,000 S.F.

BLDG. CW
 2,000 S.F.

BLDG. CX
 2,000 S.F.

BLDG. CY
 2,000 S.F.

BLDG. CZ
 2,000 S.F.

BLDG. DA
 2,000 S.F.

BLDG. DB
 2,000 S.F.

BLDG. DC
 2,000 S.F.

BLDG. DD
 2,000 S.F.

BLDG. DE
 2,000 S.F.

BLDG. DF
 2,000 S.F.

BLDG. DG
 2,000 S.F.

BLDG. DH
 2,000 S.F.

BLDG. DI
 2,000 S.F.

BLDG. DJ
 2,000 S.F.

BLDG. DK
 2,000 S.F.

BLDG. DL
 2,000 S.F.

BLDG. DM
 2,000 S.F.

BLDG. DN
 2,000 S.F.

BLDG. DO
 2,000 S.F.

BLDG. DP
 2,000 S.F.

BLDG. DQ
 2,000 S.F.

BLDG. DR
 2,000 S.F.

BLDG. DS
 2,000 S.F.

BLDG. DT
 2,000 S.F.

BLDG. DU
 2,000 S.F.

BLDG. DV
 2,000 S.F.

BLDG. DW
 2,000 S.F.

BLDG. DX
 2,000 S.F.

BLDG. DY
 2,000 S.F.

BLDG. DZ
 2,000 S.F.

BLDG. EA
 2,000 S.F.

BLDG. EB
 2,000 S.F.

BLDG. EC
 2,000 S.F.

BLDG. ED
 2,000 S.F.

BLDG. EE
 2,000 S.F.

BLDG. EF
 2,000 S.F.

BLDG. EG
 2,000 S.F.

BLDG. EH
 2,000 S.F.

BLDG. EI
 2,000 S.F.

BLDG. EJ
 2,000 S.F.

BLDG. EK
 2,000 S.F.

BLDG. EL
 2,000 S.F.

BLDG. EM
 2,000 S.F.

BLDG. EN
 2,000 S.F.

BLDG. EO
 2,000 S.F.

BLDG. EP
 2,000 S.F.

BLDG. EQ
 2,000 S.F.

BLDG. ER
 2,000 S.F.

BLDG. ES
 2,000 S.F.

BLDG. ET
 2,000 S.F.

BLDG. EU
 2,000 S.F.

BLDG. EV
 2,000 S.F.

BLDG. EW
 2,000 S.F.

BLDG. EX
 2,000 S.F.

BLDG. EY
 2,000 S.F.

BLDG. EZ
 2,000 S.F.

BLDG. FA
 2,000 S.F.

BLDG. FB
 2,000 S.F.

BLDG. FC
 2,000 S.F.

BLDG. FD
 2,000 S.F.

BLDG. FE
 2,000 S.F.

BLDG. FF
 2,000 S.F.

BLDG. FG
 2,000 S.F.

BLDG. FH
 2,000 S.F.

BLDG. FI
 2,000 S.F.

BLDG. FJ
 2,000 S.F.

BLDG. FK
 2,000 S.F.

BLDG. FL
 2,000 S.F.

BLDG. FM
 2,000 S.F.

BLDG. FN
 2,000 S.F.

BLDG. FO
 2,000 S.F.

BLDG. FP
 2,000 S.F.

BLDG. FQ
 2,000 S.F.

BLDG. FR
 2,000 S.F.

BLDG. FS
 2,000 S.F.

BLDG. FT
 2,000 S.F.

BLDG. FU
 2,000 S.F.

BLDG. FV
 2,000 S.F.

BLDG. FW
 2,000 S.F.

BLDG. FX
 2,000 S.F.

BLDG. FY
 2,000 S.F.

BLDG. FZ
 2,000 S.F.

BLDG. GA
 2,000 S.F.

BLDG. GB
 2,000 S.F.

BLDG. GC
 2,000 S.F.

BLDG. GD
 2,000 S.F.

BLDG. GE
 2,000 S.F.

BLDG. GF
 2,000 S.F.

BLDG. GG
 2,000 S.F.

BLDG. GH
 2,000 S.F.

BLDG. GI
 2,000 S.F.

BLDG. GJ
 2,000 S.F.

BLDG. GK
 2,000 S.F.

BLDG. GL
 2,000 S.F.

BLDG. GM
 2,000 S.F.

BLDG. GN
 2,000 S.F.

BLDG. GO
 2,000 S.F.

BLDG. GP
 2,000 S.F.

BLDG. GQ
 2,000 S.F.

BLDG. GR
 2,000 S.F.

BLDG. GS
 2,000 S.F.

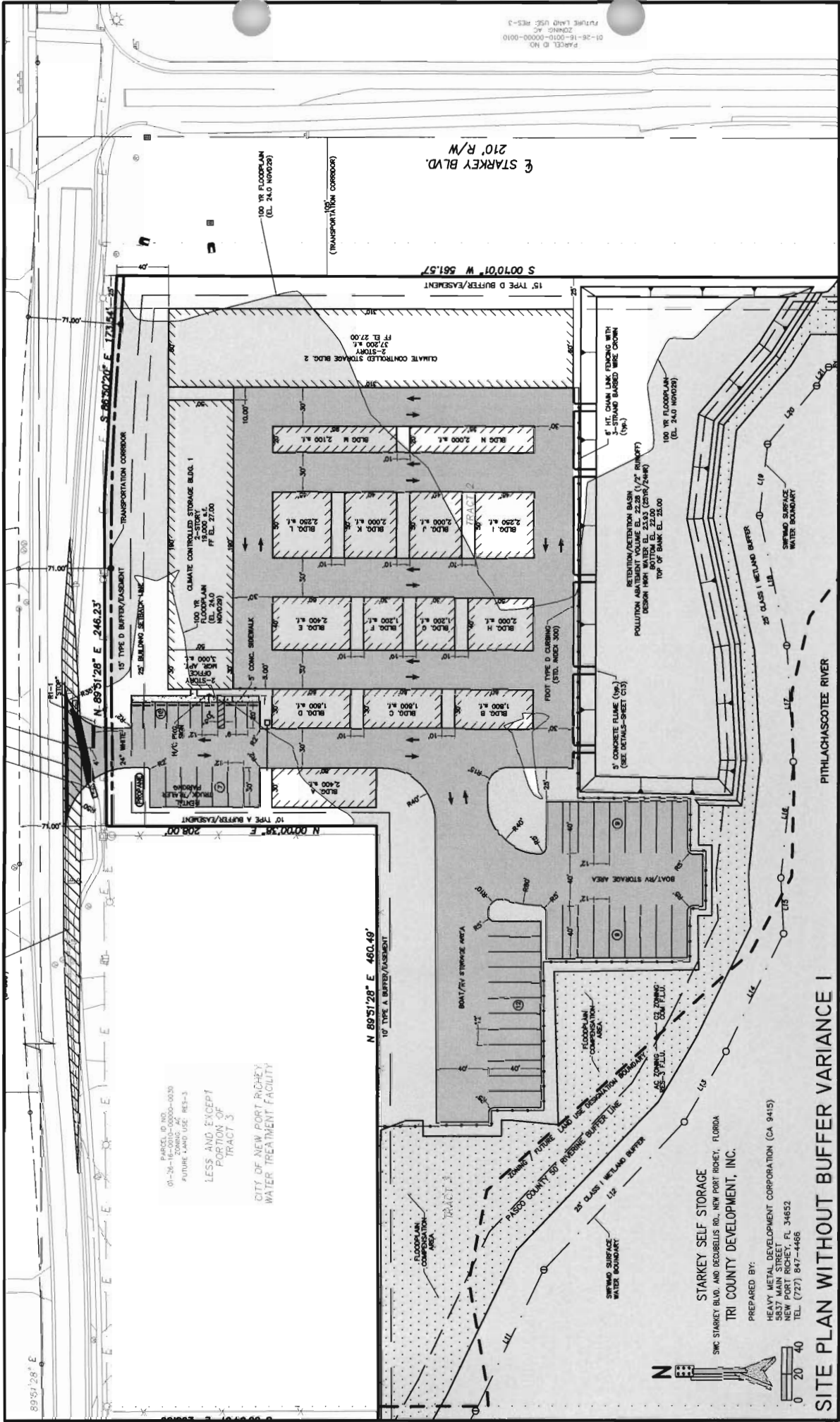
BLDG. GT
 2,000 S.F.

BLDG. GU
 2,000 S.F.

BLDG. GV
 2,000 S.F.

BLDG. GW
 2,000 S.F.

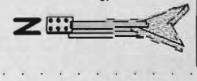
BLDG. GX
 2,000 S.F.



PARCEL ID NO. 100-00-0030
 ZONING: M-1
 FUTURE LAND USE: RES-3
 LESS AND EXCEPT
 PORTION OF
 TRACT 3

CITY OF NEW PORT RICHEY
 WATER TREATMENT FACILITY

STARKEY SELF STORAGE
 510 STARKEY BLVD. AND DEGBELLIS RD., NEW PORT RICHEY, FLORIDA
 TRI COUNTY DEVELOPMENT, INC.
 PREPARED BY:
 HEAVY METAL DEVELOPMENT CORPORATION (CA 9415)
 5517 MAIN STREET, FL 34652
 TEL: (727) 847-4486



SITE PLAN WITHOUT BUFFER VARIANCE I

PARCEL ID NO. 100-00-0030
 ZONING: M-1
 FUTURE LAND USE: RES-3

210' R/W
 STARKEY BLVD.

PITHLACHASCOTTE RIVER